

# Monitoring

## Metrics for prometheus

```
version: '3'

services:
  ntfy:
    image: binwiederhier/ntfy
    restart: unless-stopped
    environment:
      NTFY_BASE_URL: https://my-domain
      NTFY_BEHIND_PROXY: true
      NTFY_ATTACHMENT_CACHE_DIR: /var/lib/ntfy/attachments
      NTFY_CACHE_FILE: /var/lib/ntfy/cache.db
      NTFY_UPSTREAM_BASE_URL: https://ntfy.sh
      NTFY_ENABLE_LOGIN: true
      NTFY_AUTH_FILE: /var/lib/ntfy/auth.db
      NTFY_AUTH_DEFAULT_ACCESS: deny-all
      NTFY_ENABLE_METRICS: true          #Enable the metrics endpoint /metrics
    volumes:
      - ./var/lib/ntfy
    ports:
      - 4280:80
    command: serve
    expose:
      - "9090"          #Expose port for Prometheus

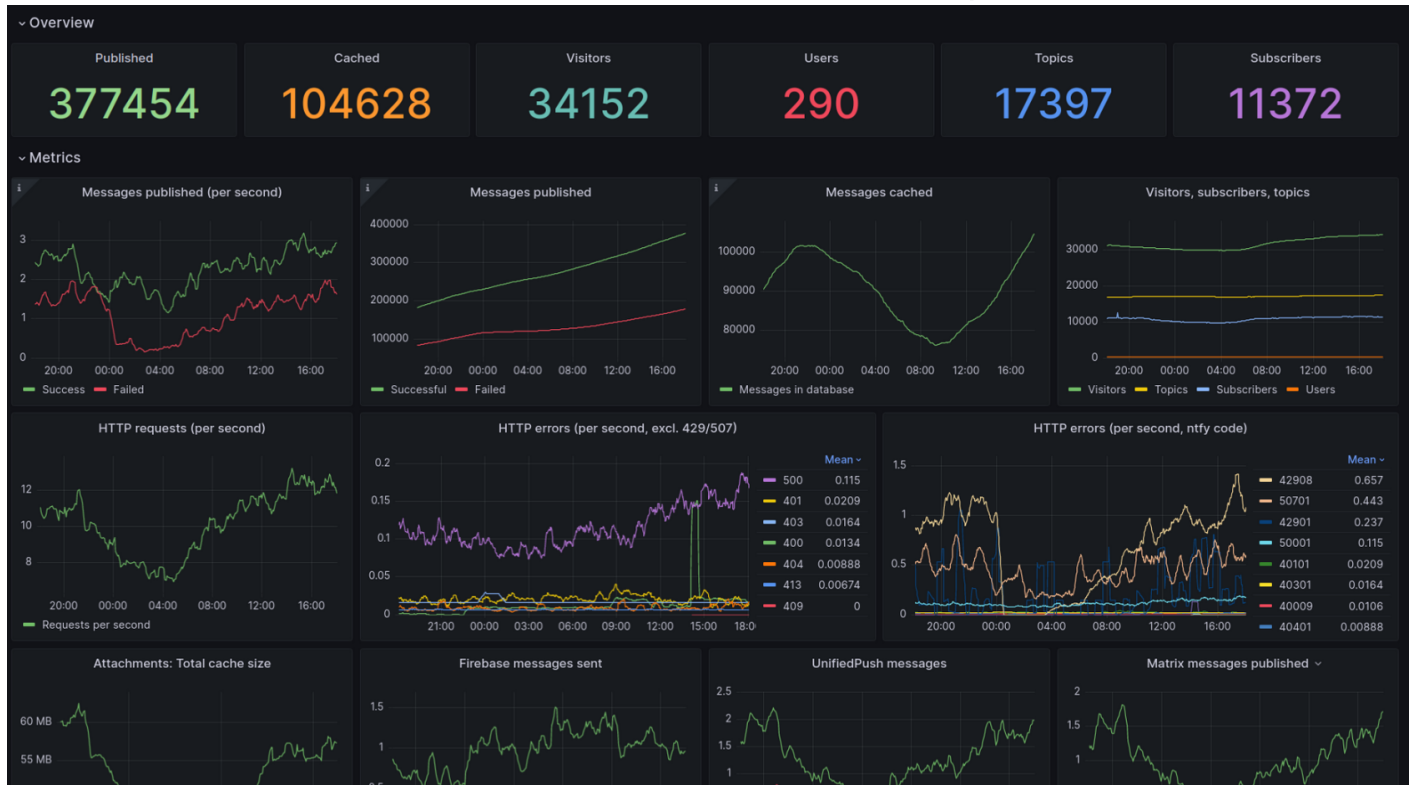
  prometheus:
    image: prom/prometheus
    volumes:
      - /home/user/docker/prometheus/config:/etc/prometheus/
    ports:
      - 9090:9090
```

restart: unless-stopped

after you have updated your **NTFY** stack with prometheus you just need to add the target to your **prometheus.yml**

# Grafana dashboard

You can find a pretty decent **Grafana** dashboard created by the **ntfy** creator on his [github](#)



Revision #3

Created 13 March 2024 14:12:17 by Makito

Updated 19 March 2024 14:14:58 by Makito